

# Holiday in the Harbor

Friday, December 1, 2006 • 3:30 P.M.-8:30 P.M.

DICKEN'S CAROLERS



## DICKEN'S CAROLERS

3:30 P.M. – 5:30 P.M.

- 3:30 Dana Wharf
- 4:15 Coffee Importers
- 4:30 El Torito
- 5:00 Harbor Grill & Mariner's Alley

THE FUN BEGINS  
AT 3:30 P.M.

## THE JACKSTRAWS

4 P.M. – 7 P.M.

- 4:30 - 5:30 Mariner's Village & Mariner's Alley
- 5:30 – 7:00 Dana Wharf

## ABBIT THE AVERAGE

4:30 P.M. – 6:30 P.M.

- 4:30 - 5:15 Dana Wharf
- 5:15 - 6:30 Mariner's Alley & Coffee Importers
- 6:00 – 6:30 El Torito (30 minute show)

## HEEBIE & JEEBIE

6 P.M. - 8:30 P.M.

- 6:00 – 7:00 Dana Wharf
- 7:00 – 8:00 Mariner's Village

## SANTA CLAUS

5 P.M. – 8:30 P.M. Mariner's Village  
Harpoon Henry's

## HOLIDAY CRAFTS

3:30 P.M. – 7:30 P.M. (2 Locations)

- (1) 3:30 – 7:30 Mariner's Alley
- (2) 3:30 – 7:30 Jolly Roger area

## PEOPLE PAINTING

3:30 P.M. – 8:30 P.M.

- 3:30 – 5:30 Golden Galleon
- 6:00 – 8:30 Coffee Importers

## CARICATURE ARTIST

5 P.M. – 8:30 P.M. El Torito

## ZANNY SHOPPERS

5:30 P.M. – 7:30 P.M.

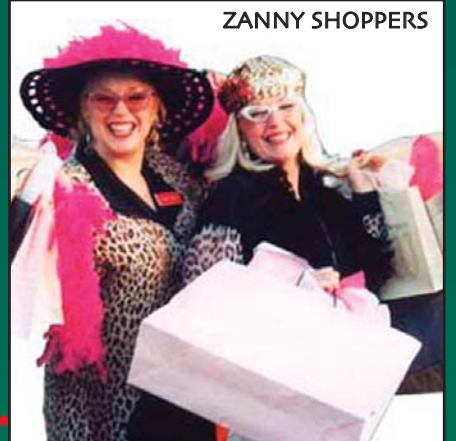
- 5:30 – 6:30 Mariner's Village
- 6:30 – 7:30 Dana Wharf



THE JACKSTRAWS



ZANNY SHOPPERS



HEEBIE & JEEBIE





VINTAGE MARINA PARTNERS

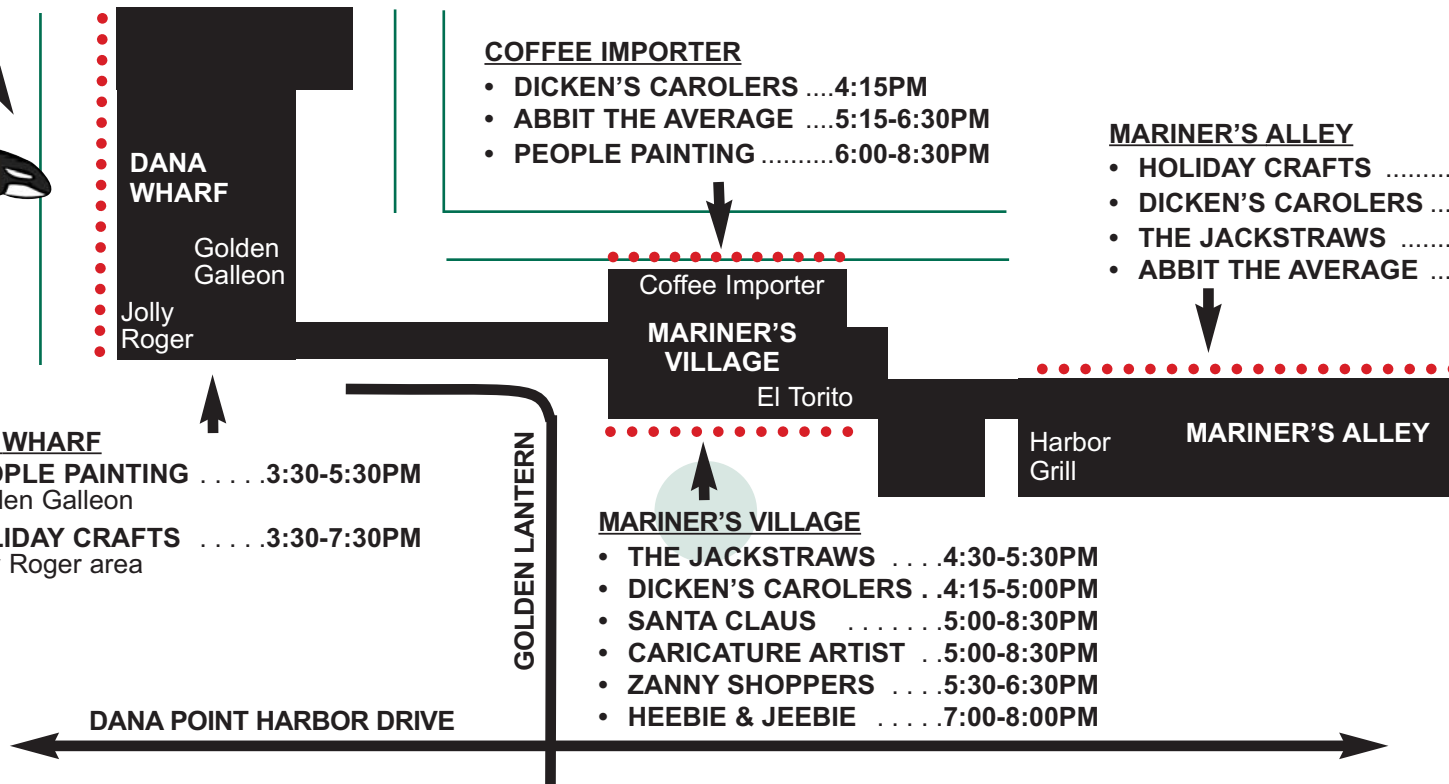
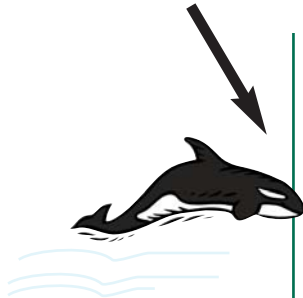
# Holiday in the Harbor



Friday, December 1, 2006 • 3:30 P.M.-8:30 P.M.

## DANA WHARF

- DICKEN'S CAROLERS.....3:30PM
- ABBIT THE AVERAGE .....4:30-5:15PM
- THE JACKSTRAWS .....5:30-7:00PM
- HEEBIE & JEEBIE .....6:00-7:00PM
- ZANNY SHOPPERS .....6:30-7:30PM



## COFFEE IMPORTER

- DICKEN'S CAROLERS ....4:15PM
- ABBIT THE AVERAGE ....5:15-6:30PM
- PEOPLE PAINTING .....6:00-8:30PM

## MARINER'S ALLEY

- HOLIDAY CRAFTS .....3:30-7:30PM
- DICKEN'S CAROLERS ....5:00PM
- THE JACKSTRAWS .....4:30-5:30PM
- ABBIT THE AVERAGE ....5:15-6:30PM

## DANA WHARF

- PEOPLE PAINTING . . . . 3:30-5:30PM  
Golden Galleon
- HOLIDAY CRAFTS . . . . 3:30-7:30PM  
Jolly Roger area

## MARINER'S VILLAGE

- THE JACKSTRAWS . . . . 4:30-5:30PM
- DICKEN'S CAROLERS . . 4:15-5:00PM
- SANTA CLAUS . . . . . 5:00-8:30PM
- CARICATURE ARTIST . . 5:00-8:30PM
- ZANNY SHOPPERS . . . . 5:30-6:30PM
- HEEBIE & JEEBIE . . . . 7:00-8:00PM

December Harbor Events

## BOAT RIDES WITH SANTA

Dec. 2, Saturday • 10 A.M. - 3 P.M.  
at Dana Wharf Sportfishing Docks

## 32nd Annual Dana Point Harbor BOAT PARADE OF LIGHTS

- Dec. 8 - 9, 2006 Fri. & Sat. ALSO,
- Dec. 15 - 16, 2006 (Fri. & Sat.)  
7:30 P.M. by the water's edge

For more information on Dana Point Harbor events call 949. 923.2255 or visit our website [DanaHarbor.com](http://DanaHarbor.com)